

NEW BRUNSWICK
MULTICULTURAL
COUNCIL



CONSEIL
MULTICULTUREL DU
NOUVEAU-BRUNSWICK

PERSONAL JOURNEY



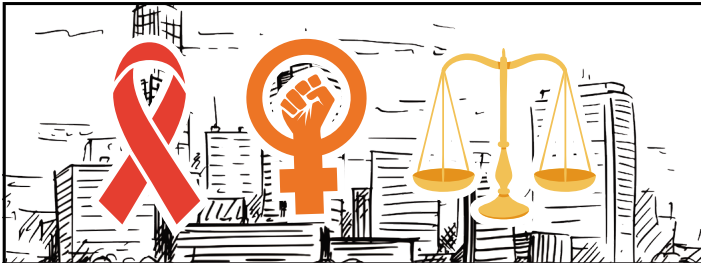
IMvisible NB
JeSuisVisible NB



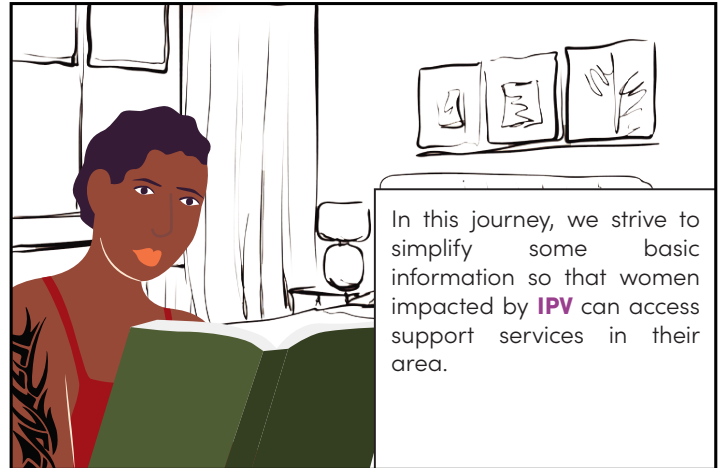
Personal Journey

This Personal Journey is for **non-status, refugee, and immigrant women, international women students, and temporary women workers** who are experiencing or have previously experienced **intimate partner violence (IPV)**. This journey aims to provide a clear direction for accessing support services in New Brunswick. **For a full definition of intimate partner violence, please visit the Domestic Violence pdf.**

➔ [Domestic Violence pdf](#)



In this journey, we will use the following abbreviations--**IPV** for intimate partner violence; **NSRI** women for non-status, refugee and immigrant women; and **EIO** for the emergency intervention order.



In this journey, we strive to simplify some basic information so that women impacted by **IPV** can access support services in their area.



If you are currently experiencing (or have experienced) any feeling of violence or abuse from your current or previous partner, **we encourage you to contact a domestic violence outreach worker or crisis intervenor in your area.** To learn more about the available services in your area, please visit the Women's Equality Branch website:

➔ **Women's Equality Branch**



If you are in immediate danger or fear you may be harmed, **please call 911.** The police are trained to respond to intimate partner violence. If you do not speak English or French, try to find someone that you trust to support your call. If you cannot find anyone you can trust to interpret for you, try your best to use any translation application or website or **you can call 1.866.863.0511 for a free-of-charge interpretation service.**





It is essential to know that crisis intervenors working at transition shelters are available **24/7**. **Outreach workers are available from Monday to Friday (approximately 9:00 AM - 5:00 PM).**

Monday	9:00 AM - 5:00 PM
Tuesday	9:00 AM - 5:00 PM
Wednesday	9:00 AM - 5:00 PM
Thursday	9:00 AM - 5:00 PM
Friday	9:00 AM - 5:00 PM

It is recommended to **call, text, or email** before your visit.



A crisis intervener or outreach worker will support you based on your individual situation and needs. Please note that your worker may conduct a danger assessment with you. **The objective of a danger assessment is to evaluate the extent of physical risk involved in your situation.**



After the danger assessment process, your outreach worker or crisis intervener will develop a safety plan with you whether you decide to stay in your relationship or leave.

Your safety plan will contain options and resources for you to think about or access under a variety of situations, including heightened abuse.

For permanent residents and Canadian citizens:

If you are in need of safe and affordable housing, you can apply for second-stage housing. **This service is specifically for individuals subjected to IPV, including their children.** Second stage housing provides affordable (often subsidized) rental units meant to enhance safety and further support women in achieving their personal objectives. Through this program, women can gain skills and knowledge to help them live independently, and free of violence. **To learn more about the second-stage housing program, please visit the Women's Equality Branch website:**

➔ **Women's Equality Branch**



If a rental unit is not available through second stage, you may also apply for subsidized low-rental housing through the **Department of Social Development**. **To contact the Department of Social Development, kindly visit:**

➔ **Social Development**



For non-permanent residents and non-Canadian citizens:

You can contact the **Department of Social Development** to explore your eligibility for supports and services. **To contact the Department of Social Development, kindly visit:**

➔ **Social Development**

Emergency Intervention Order

For all women in NB, regardless of resident status in Canada: If you are experiencing violence by your current or previous partner and this risk is threatening your safety various service providers can help you apply for an **Emergency Intervention Order**. Service providers include: **police officers, victim services workers, transition house and second stage intervenors, domestic violence outreach workers, and Department of Social Development social workers.**



An **Emergency Intervention Order (EIO)** is an immediate and temporary legal intervention. **EIO's** do not replace criminal and justice interventions (like reporting a crime or filing for divorce) but **they can provide temporary measures such as prohibiting the abusive partner from contacting you.** If issued, an **EIO** may also determine who can and can't remain in a given residence. Supervision while gathering personal property may be provided, and temporary custody of children can be determined by an emergency intervention order.



EIO's are typically granted when there is a serious or urgent situation, as determined by a **Hearing Officer**. The Hearing Officer reviews applications and conducts telephone hearings with the victim and her presiding service provider. Completing an **EIO** application, scheduling a hearing, and then finding out if it is granted is quicker than going through the court system. However, processing can take **up to 7 or 8 hours** following the telephone hearing. It is important to know that applying for the **EIO** does not guarantee the approval of your application. **To learn more about the EIO, kindly visit:**

➔ **Emergency Intervention Orders**

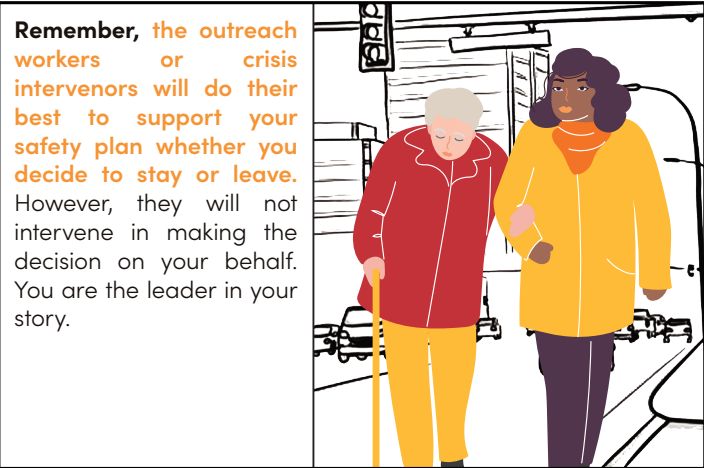


Conclusion

It is important to know that the **Domestic Violence Outreach and Transitional Housing Services** in NB are **continuous**, and you are more than welcome to consult or use the services at any time again.



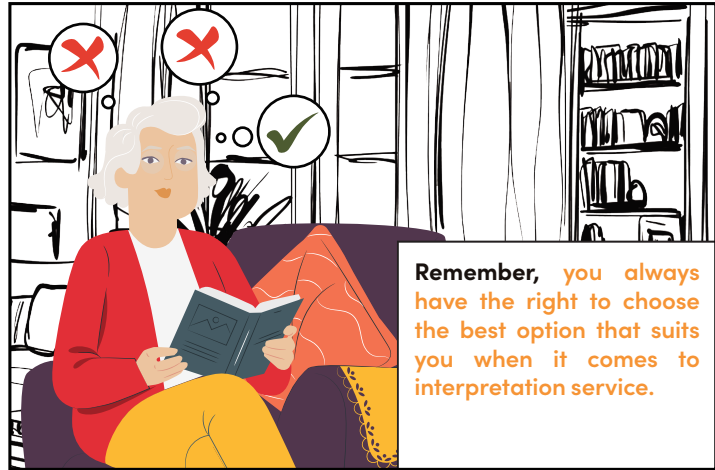
It is important to know that the **Domestic Violence Outreach and Transitional Housing Services** in NB **are for all victims and survivors of IPV** in NB, **regardless of their status in Canada**. It is safe for the **NSRI** women to connect with the services once needed. Using the services **will not impact** your status in Canada. The services are also **free of charge** and **do not** require any legal documents. Finally, the services are **completely confidential** unless something that is disclosed (**e.g. harm to children**) is required to be reported by law.



Remember, the outreach workers or crisis intervenors will do their best to support your safety plan whether you decide to stay or leave. However, they will not intervene in making the decision on your behalf. You are the leader in your story.

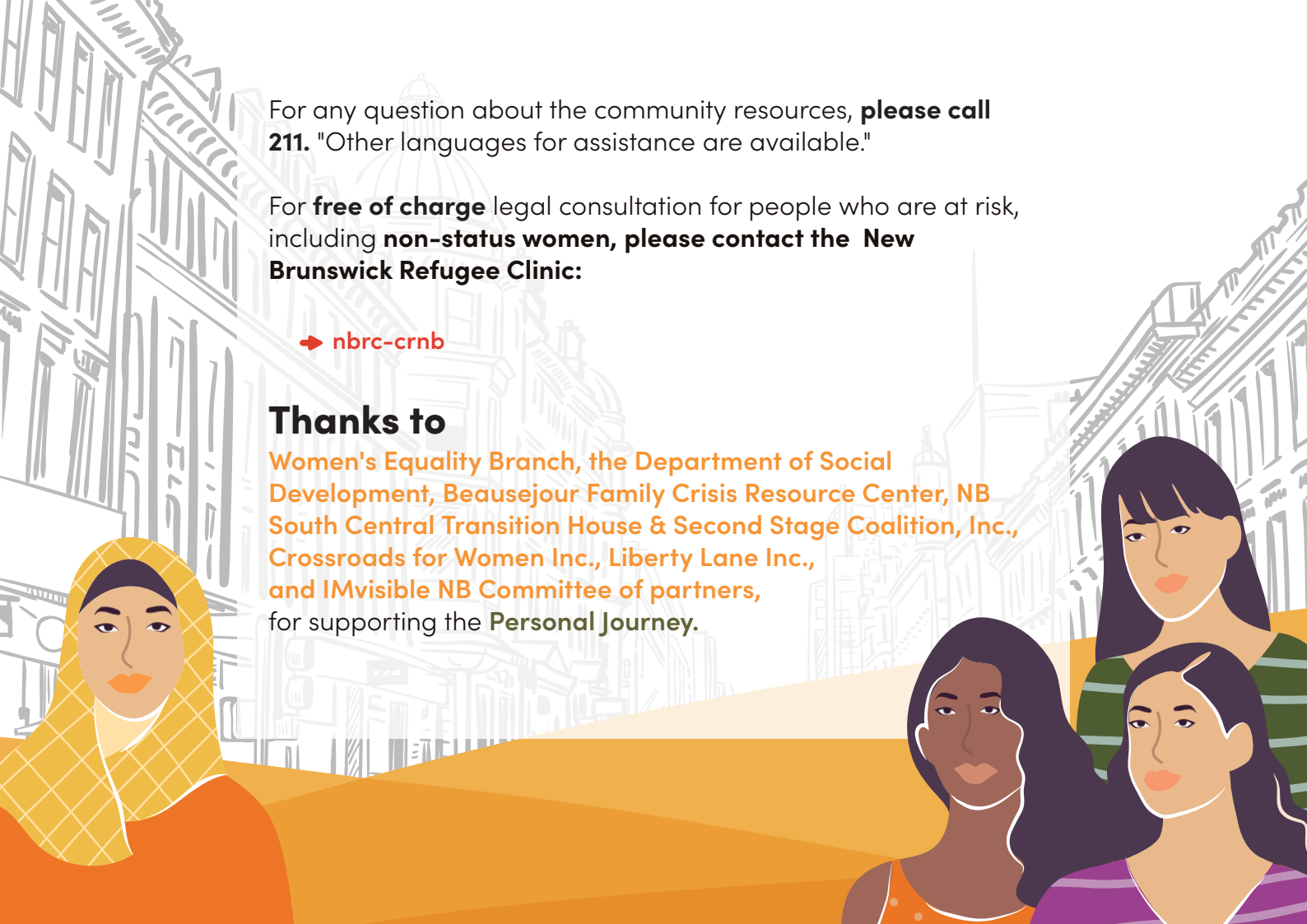
Remember

Remember, abuse is never the victim's fault. We are all here to support you.



Remember, to make sure that you have access to the resources list of different services in your area.

Remember, you always have the right to choose the best option that suits you when it comes to interpretation service.



For any question about the community resources, **please call 211**. "Other languages for assistance are available."

For **free of charge** legal consultation for people who are at risk, including **non-status women**, please contact the **New Brunswick Refugee Clinic**:

➔ [nbrc-crnb](http://nbrc-crnb.org)

Thanks to

Women's Equality Branch, the Department of Social Development, Beausejour Family Crisis Resource Center, NB South Central Transition House & Second Stage Coalition, Inc., Crossroads for Women Inc., Liberty Lane Inc., and IMvisible NB Committee of partners, for supporting the **Personal Journey**.



IMVISIBLE NB IS FUNDED BY WOMEN AND GENDER EQUALITY CANADA



Women and Gender
Equality Canada

Femmes et Égalité
des genres Canada